

Looking for a place to relax from your busy student life?



Fear not! There are plenty of options around the CTS to take a little break:

Währinger Park

Do you need a little time to unwind in nature? Then **Währinger Park** is perfect for you! Located right next to the CTS, it is easily reachable on foot and a perfect oasis of tranquility in the warm spring and summer months! Lie down in the soft grass or sit down on one of the many benches. Perfect for taking a short or not so short break from the stressful student routine. Open 24/7!



Laus & Maus

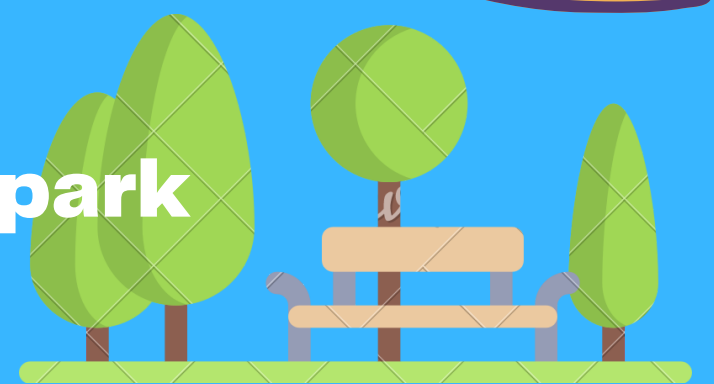
Laus & Maus is a cozy little café located right at the upper entrance to **Währinger Park**. It has indoor and outdoor seating available, so you can go there in any season.

I was smitten with the cute interior design at first sight, pastel color enthusiasts will love this place! Indulge in delicious Belgian waffles, homemade cakes and tea or coffee (vegan milk options available!) to bring back that precious concentration you need to focus on the next course.

Open everyday from 11am to 6pm !



Türkenschanzpark



Another park close to the CTS is "**Türkenschanzpark**", located just a 12 minute walk away. It offers great opportunities to relax if you have a longer break in between your courses. It has a lot of green spaces and little ponds to escape the loud city life for a little while. For the more adventurous, there is **Paulinenwarte**, an observation tower which offers a great view. Open 24/7 all year around!

Sternwartepark

Located right next to **Türkenschanzpark**, the **Sternwartepark** is a perfect little wilderness. The name translates to observatory park, so it does not come as a surprise that there is a cute little observatory in the park that appears to have jumped right out of a fairytale. Open Monday until Friday from 8am to 6pm.

